

Ref: casa rossi

Price: 25,000€



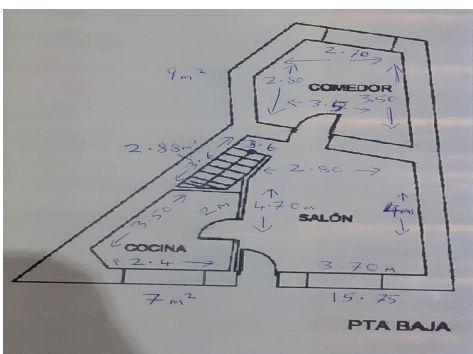
- Townhouse**
- Yeste**
- 2**
- 1**
- Terrace: Yes**
- Terrace**
- Parking: Yes**
- Beach: 150 Minutes**
- Shops: 1 Minutes**
- Airport: 180 Minutes**

Unusual, restored traditional village house for sale in inland Spain. The house is in the village of YESTE in the province of Albacete, Castile la Mancha. A 2 ½ hr drive from Alicante airport.

..One side of the house features an exposed foundation stone from the ancient church

...The house is typical of mountain villages in that area & is built in tradicional style with small windows to protect you against too much sun.

Set in the old part of the village the house is positioned next to the church with



Unusual, restored traditional village house for sale in inland Spain. The house is in the village of YESTE in the province of Albacete, Castile la Mancha. A 2 ½ hr drive from Alicante airport.

..One side of the house features an exposed foundation stone from the ancient church

...The house is typical of mountain villages in that area & is built in traditional style with small windows to protect you against too much sun.

Set in the old part of the village the house is positioned next to the church with pedestrian access only. Approx 100sq mtrs consisting Ground floor: living room, fitted kitchen, dining room/3rd bedroom Stairs to Second floor: 2 bedrooms, 1 bathroom stairs to Roof terrace (8sq mtrs) with breathtaking mountain views. Under roof store. Mains services. Electric radiators and open fire

The village of Yeste is a tourist location offering many activities to visitors. The town is well supplied with restaurant/bars and shops, schools and 24hr medical centre. The village hosts various traditional 'fiestas' throughout the year, including a medieval traditional fair. The River Segura runs close and the town has a white water rafting and canoeing centre as well as equestrian centre and many designated walking routes. Suit walkers, climbers, artists, writers, nature lovers.