

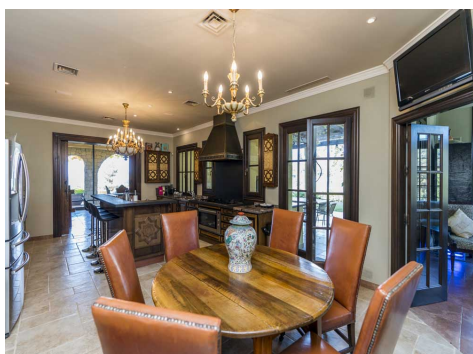
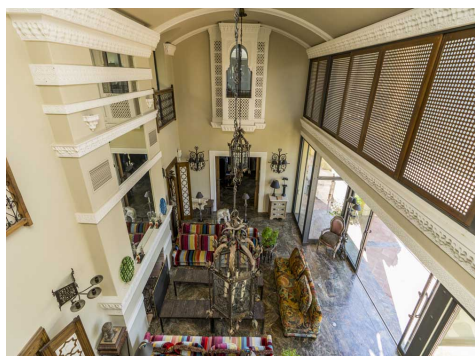
Ref: LD 1654

Price: 4,750,000€



-  **Villa**
-  **Marbella**
-  **7**
-  **7**
-  **1,009m<sup>2</sup> Build Size**
-  **5,082m<sup>2</sup> Plot Size**
-  **Pool: Yes**

A rare opportunity to purchase a private landmark property. The main entrance door leads immediately to a truly breath-taking Moorish-style atrium with handcrafted Alhambra plaster arches, overlooking a basement fountain. The ground floor has a particularly lovely living room with a double height barreled ceiling, scored with an emerald green Indian marble floor, a grand statement fireplace and floor to ceiling windows. The bespoke kitchen and adjoining family room give onto the outside dining area with a built in vented barbecue. Informal dining is facilitated with both table and counter seat...(Ask for More Details!)



A rare opportunity to purchase a private landmark property. The main entrance door leads immediately to a truly breath-taking Moorish-style atrium with handcrafted Alhambra plaster arches, overlooking a basement fountain. The ground floor has a particularly lovely living room with a double height barreled ceiling, scored with an emerald green Indian marble floor, a grand statement fireplace and floor to ceiling windows. The bespoke kitchen and adjoining family room give onto the outside dining area with a built in vented barbecue. Informal dining is facilitated with both table and counter seating in the kitchen which connects directly to the formal dining room. On the first floor there are 5 spacious en-suite bedrooms all with breathtaking views from their private terraces. There is also a large roof terrace with a covered kitchenette and dining area which offers incredible 360-degree panoramic views. The lower level of this home is all about entertainment and relaxation. The large indoor-outdoor heated infinity pool is surrounded with luxurious Travertine marble and has an electrically operated solar panel pool cover. Owners and their guests will also enjoy a gym, cinema room ,games room and adjoining shower-changing room. There are 2 completely independent guest, or staff apartments with separate access via a sunken courtyard with fountain. There is a generous double garage at the lower level with direct access to the house and a 2-vehicle covered carport at ground floor level, again with direct access to the ground floor. There is a 4 person lift from basement to roof, but the semi-circular stairwell with amber-tinted, star windows and cascading, antique lanterns may tempt you to exercise and enjoy the vista across the atrium.