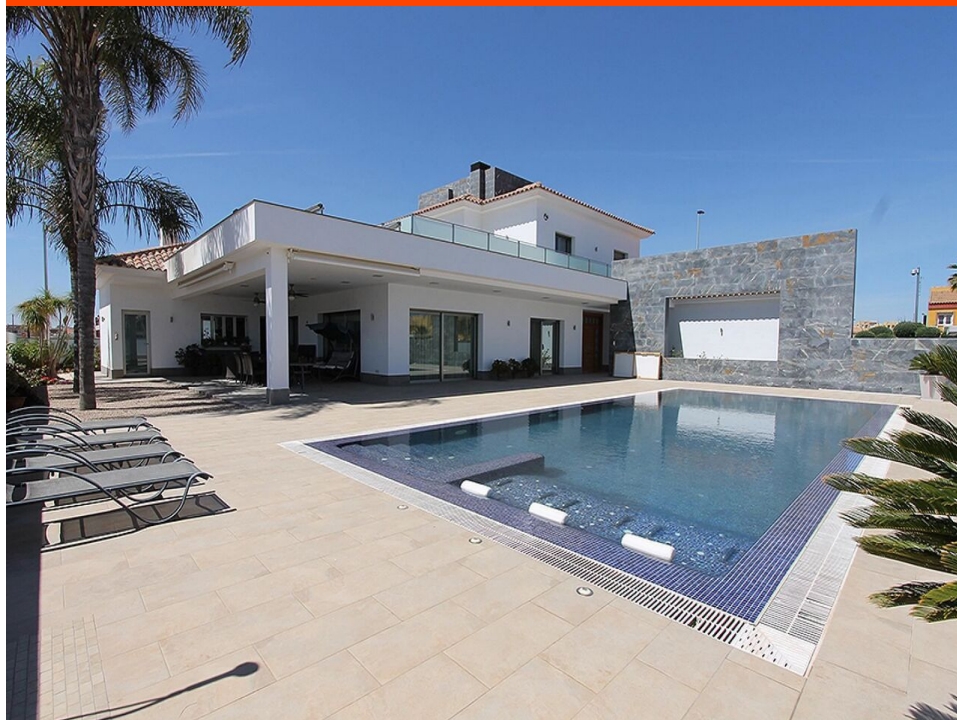


Ref: MP745

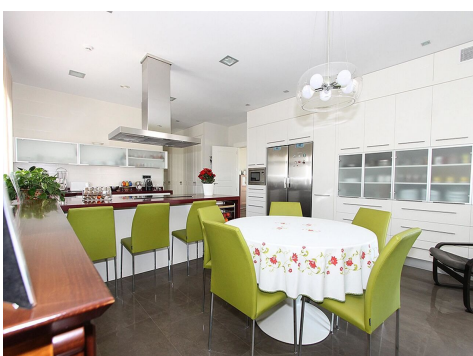
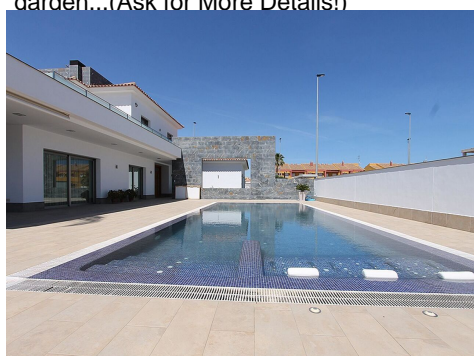
Price: 1,350,000€



- Villa**
- San Pedro Del Pinatar**
- 5**
- 6**
- 1,150m² Build Size**
- 1,118m² Plot Size**
- Pool: Yes**

Stylish villa with exclusive feel and a large plot with private pool A warm welcome to the charming area of San Pedro del Pinatar on the Costa Calida. Here you live at a comfortable distance from the fine beaches of San Pedro del Pinatar and Lo Pagán, within walking distance of the city center and a short drive from the shopping center. San Pedro del Pinata, is a lush coastal town located between the Mar Menor and the Mediterranean Sea and is known for its fishing background, mud baths and vast beaches.

The villa has an exclusive feel and is an accommodation out of the ordinary, in the garden...(Ask for More Details!)



Stylish villa with exclusive feel and a large plot with private pool A warm welcome to the charming area of San Pedro del Pinatar on the Costa Calida. Here you live at a comfortable distance from the fine beaches of San Pedro del Pinatar and Lo Pagán, within walking distance of the city center and a short drive from the shopping center. San Pedro del Pinata, is a lush coastal town located between the Mar Menor and the Mediterranean Sea and is known for its fishing background, mud baths and vast beaches.

The villa has an exclusive feel and is an accommodation out of the ordinary, in the garden there is a private pool.

On the entrance level there are three bedrooms, of which the master bedroom has a private dressing room, dining room, kitchen, living room, toilet, laundry room and four bathrooms, three of which are en suite to the bedrooms.

Upstairs there are two more bedrooms with bathrooms en suite. The bedrooms also have access to a nice terrace.

In the basement there is a large garage with plenty of space for several cars. There is also a gym, storage room, bathroom and living room with kitchen and pantry. In the basement there are also engine rooms, water tanks and pressure group, automatic room, generator set panel, home automation and alarm box.

It is also possible to buy an orchard of about 650.80 sqm adjacent to the house.

You are warmly welcome to contact us at HusmanHagberg for more information or to book a tour. If you do not have the opportunity to be on site, we will of course carry out digital screenings.