

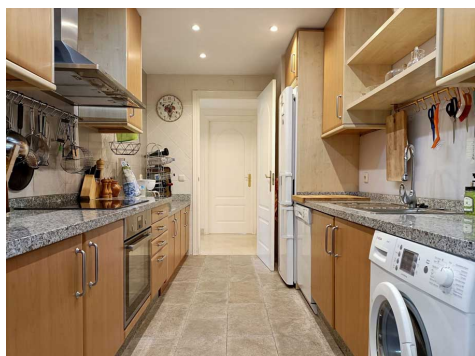
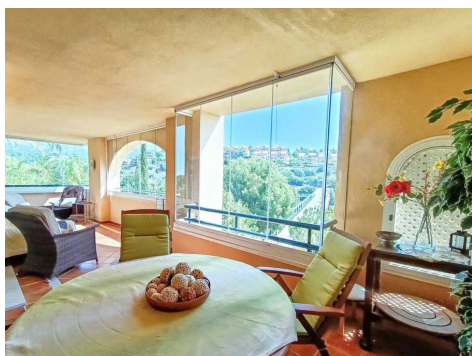
Ref: LD 1592

Price: 520,000€



-  **Apartment**
-  **Elviria**
-  **3**
-  **2**
-  **166m² Build Size**
-  **Pool: Yes**

NEW on the market! Spectacular corner apartment with magnificent open views to the golf course, located in the heart of popular Elviria. Perfectly positioned and very private, this spacious apartment features two good size bedrooms sharing family bathroom, master bedroom with bathroom en-suite and access to main terrace, fully fitted kitchen with equipped utility room, very bright living room and extensive covered and glassed-in terrace. The community is very well kept and comes with manicured gardens, various swimming pools and a lovely fountain. The complex is peaceful and quiet, yet only 7m...(Ask for More Details!)



NEW on the market! Spectacular corner apartment with magnificent open views to the golf course, located in the heart of popular Elviria. Perfectly positioned and very private, this spacious apartment features two good size bedrooms sharing family bathroom, master bedroom with bathroom en-suite and access to main terrace, fully fitted kitchen with equipped utility room, very bright living room and extensive covered and glassed-in terrace. The community is very well kept and comes with manicured gardens, various swimming pools and a lovely fountain. The complex is peaceful and quiet, yet only 7min walk from Santa Maria Golf Club and about 15min walk to Elviria Commercial Centre where there are a number of amenities including bars, restaurants, banks and shops. Beautiful sandy beach is about 25min walk and Marbella centre at 10min drive. Nearby there are also: Cabopino Port, Hotel Don Carlos, Nikki Beach, Santa Clara Golf - to name but few. The property comes complete with private parking space and storage room in the underground garage.