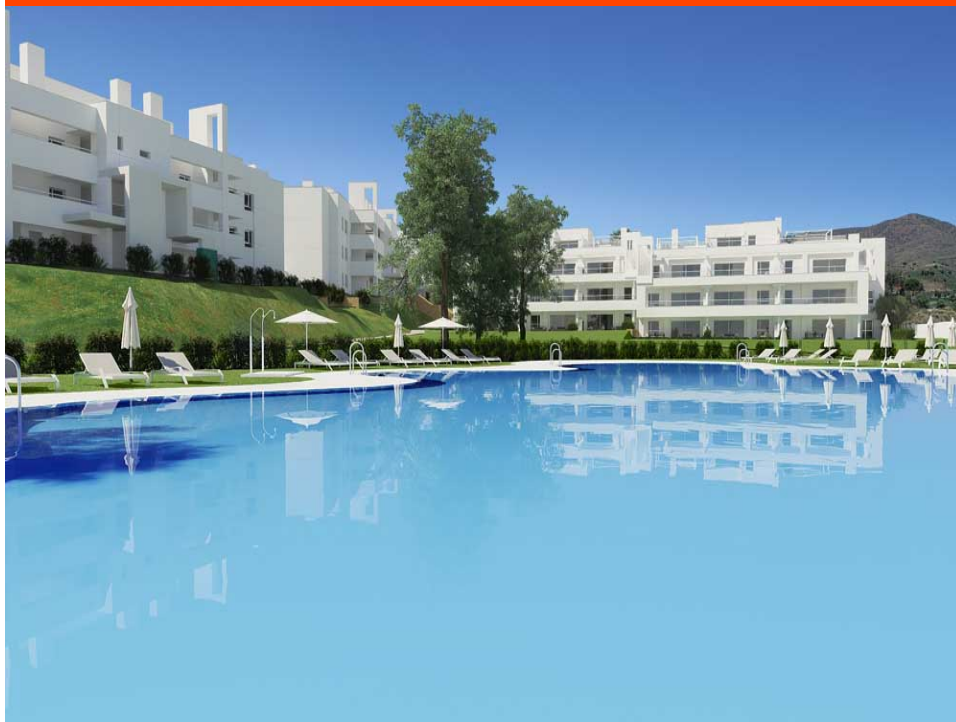


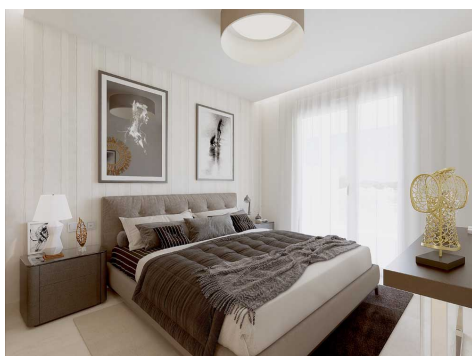
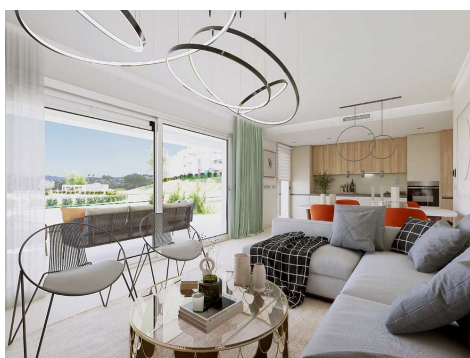
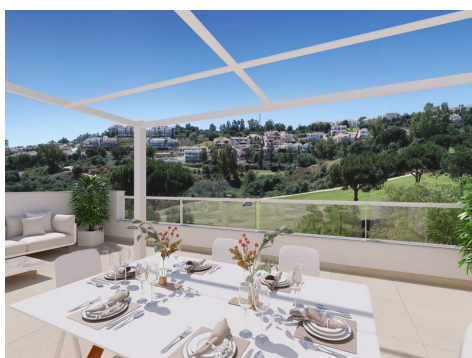
**Ref: LD 1516**

**Price: 449,000€**



-  **Apartment**
-  **La Cala De Mijas**
-  **2**
-  **2**
-  **81m² Build Size**
-  **Pool: Yes**

This superb residence is being built at the top of the hill overlooking the Europa Golf Course, in a fabulous position that provides panoramic views of the golf course and some of them to the sea. All the apartments and penthouses are East or South facing, meaning that they enjoy plenty of light all day long. The apartments are located near to the Club House and the Hotel and Spa, where owners in the Resort can take advantage of the benefits and discounts provided by the Privilege Card. The project is split over two independent plots with 105 and 90 apartments, integrated into a common archite...(Ask for More Details!)



This superb residence is being built at the top of the hill overlooking the Europa Golf Course, in a fabulous position that provides panoramic views of the golf course and some of them to the sea. All the apartments and penthouses are East or South facing, meaning that they enjoy plenty of light all day long. The apartments are located near to the Club House and the Hotel and Spa, where owners in the Resort can take advantage of the benefits and discounts provided by the Privilege Card. The project is split over two independent plots with 105 and 90 apartments, integrated into a common architectural concept. The first line golf apartments are near the hotel, the Clubhouse and the sport area and SPA. The first phase, is already underway, with 48 apartments in five buildings with 3 storeys each. All the apartments have large terraces with glass balcony enclosures so that you can fully enjoy the fabulous views of the golf course and the apartments on the ground floor also have private gardens with views of the pool, resort gardens and the golf course that surrounds the development.